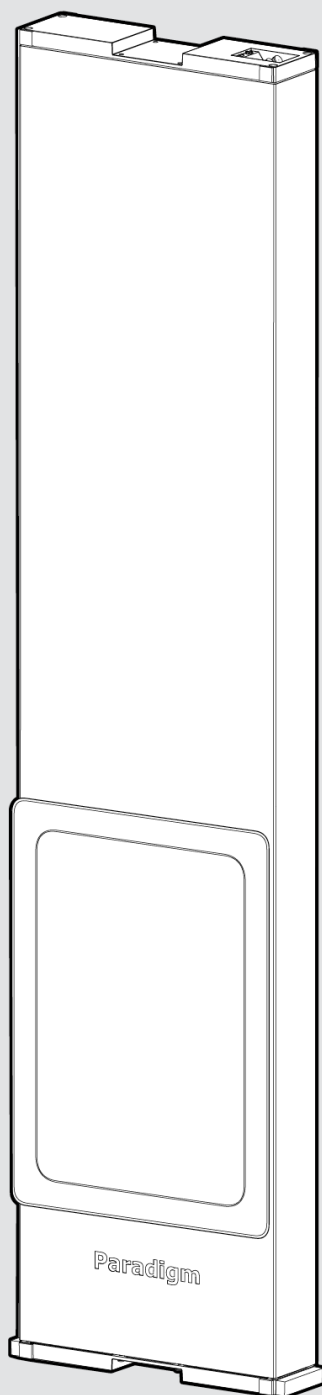


# Paradigm<sup>®</sup>



## **SFC12-SYS**

Performance In-Wall Subwoofer  
& Backbox

## Owner's Manual

# RECYCLING AND REUSE GUIDELINES FOR EUROPE



In accordance with the European Union WEEE (Waste Electrical and Electronic Equipment) directive effective August 13, 2005, we would like to notify you that this product may contain regulated materials which, upon disposal, according to the WEEE directive, require special reuse and recycling processing. For this reason Paradigm Electronics Inc. (manufacturers of Paradigm® speakers and Anthem® Electronics) has arranged with its distributors in European Union member nations to collect and recycle this product at no cost to you. To find your local distributor please contact the dealer from whom you purchased this product or go to our website at **[www.paradigm.com](http://www.paradigm.com)**.

Please note that only the product falls under the WEEE directive. When disposing of packaging and other shipping material we encourage you to recycle through the normal channels.

# TABLE OF CONTENTS

- 1.0 SUBWOOFER ASSEMBLY PARTS LIST (EACH SUBWOOFER)**
- 2.0 YOUR NEW SUBWOOFER**
- 3.0 THE LISTENING ROOM**
- 4.0 GUIDELINES FOR DECIDING ON SUBWOOFER PLACEMENT**
- 5.0 SUBWOOFER PLACEMENT**
- 6.0 COLOR MATCH PAINTING (OPTIONAL)**
- 7.0 BACKBOX INSTALLATION**
- 8.0 WIRING CONNECTIONS**
- 9.0 SUBWOOFER INSTALLATION**
- 10.0 LIMITED WARRANTY**

# 1.0 SUBWOOFER ASSEMBLY PARTS LIST (Each Subwoofer)

## **Backbox Package (Box 1 of 2)**

- 1 backbox
- 1 mounting accessories kit

## **Subwoofer Package (Box 2 of 2)**

- 1 subwoofer
- 1 subwoofer grille
- 1 grille spacer kit (8 sets)

## 2.0 YOUR NEW SUBWOOFER

### **Break-In**

Allow your Paradigm® in-wall subwoofer system to operate for several hours before you listen critically.

### **Cleaning**

Clean subwoofer housing with a soft, damp cloth. Do not use a strong or abrasive cleaner or get any part of the subwoofer wet.

If you wish to paint your subwoofer you must do so before installing it. See the section on “Color Match Painting” later in this manual for full details.

## 3.0 THE LISTENING ROOM

Paradigm® in-wall subwoofers are suitable for use in a wide variety of listening environments. Note however, that room construction, dimensions and furnishings all play a part in the quality of sound you ultimately achieve. Try to follow these guidelines:

- a. Strong, rigid walls are preferred for best bass balance. For even better results we recommend adding additional bracing and acoustic damping material to the cavity prior to installation. See section on Installation later in this manual for more details.
- b. It is important to note that just as the amount of soft furnishings has a decided impact on mid and high frequencies, those frequencies below 150 Hz are dramatically affected by the room itself — its size, shape, as well as the physical boundaries of the room.

The extra care you take in correctly positioning your subwoofers will result in greater listening enjoyment. Follow the guidelines for placement below to achieve optimal sound in your room.

## 4.0 GUIDELINES FOR DECIDING ON SUBWOOFER PLACEMENT

When considering subwoofer placement directly into a wall, keep the following in mind:

- **DO NOT** install subwoofer in lath or plaster — over time, the bass vibrations will cause material to crack;
- **DO NOT** install subwoofer in cavities that contain ductwork;
- **DO NOT** locate subwoofer close to wall-mounted fixtures that may vibrate (remember to check the other side of the wall too!);
- **DO NOT** install subwoofer in a cavity that already contains an in-wall speaker;
- If installing subwoofer in a wall with metal studs, make sure the studs are securely fastened so that they do not vibrate or rattle;
- Some acoustic bleed-through in the adjacent room is unavoidable. See section Installation later in this manual for suggestions to reduce bleed-through.

Guidelines and suggestions for the actual installation process can be found later in this manual.

## 5.0 SUBWOOFER PLACEMENT

Bass is less and less directional as it goes down in frequency. For best sonic integration, placing your subwoofer in the wall at the front or rear of the room and close to a corner usually provides the best bass performance and sonic integration. If this location is not possible, keeping in mind the guidelines provided earlier, you may place your subwoofer anywhere in the wall without affecting the stereo image of your front speakers or the soundstage of your multi-channel speaker system.

Figs. 1a and 1b below highlight how bass output is generally affected by in-wall placement. When seated in the typical listening area of your room, placing the subwoofers in the various positions will typically result in bass performance as follows: Guidelines and suggestions for the actual installation process can be found later in this manual.

**Fig. 1a:** Corner placement close to the floor provides the best balance of output and accuracy.

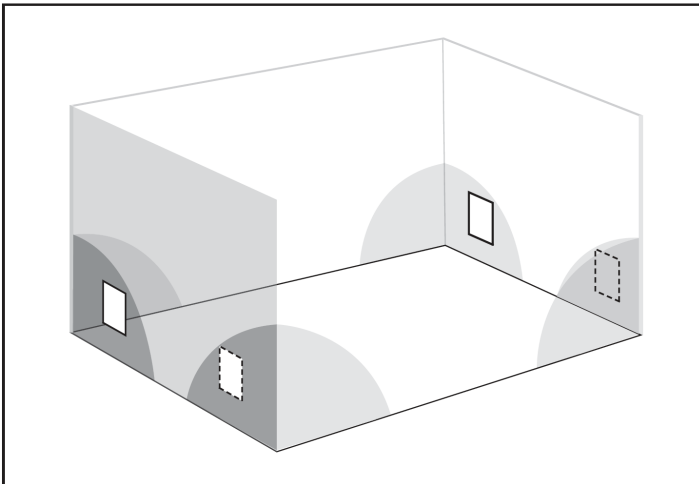
**Fig. 1b:** Placement anywhere along the wall close to the floor but outside the “shaded” area will provide slightly reduced output, though still acceptable accuracy.

### The Advantages of Using Two Subwoofers

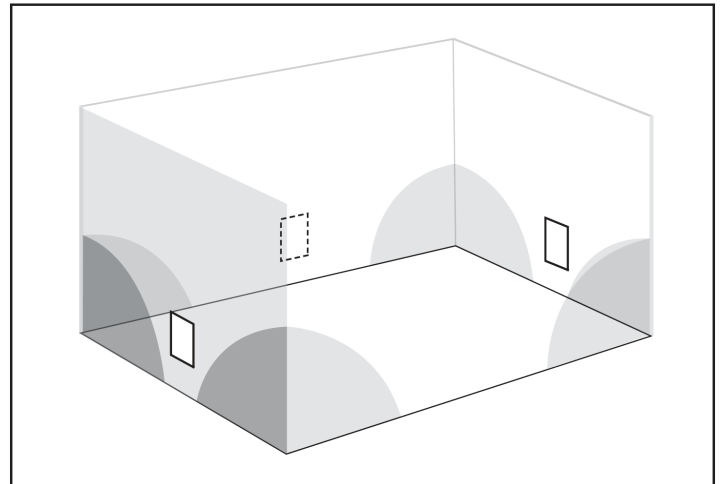
We highly recommend using two Paradigm® Reference in-wall subwoofers in your music and home theater system. Using two subwoofers allows you to randomize the standing waves within your listening room so that bass is distributed in a more uniform manner. Using two subwoofers can also ensure even lower distortion, especially at high output levels.

If desired, for further optimized bass performance and even greater output, you can install an additional pair of Paradigm® Reference in-wall subwoofers. Figure 2 provides recommended placement for four subwoofers.

*Broken lines in figures below represent alternate placement for two subwoofers.*

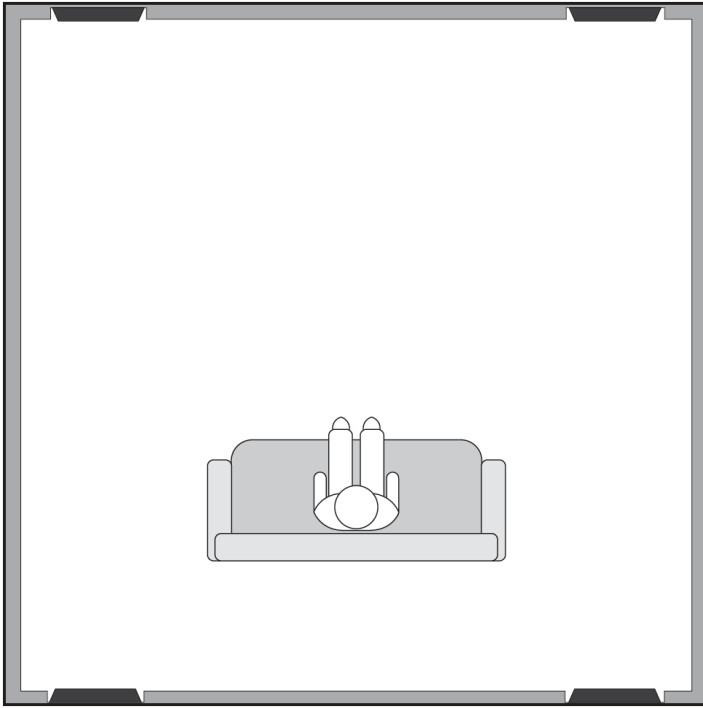


**Fig. 1a** Two subwoofers close to floor in corners of room



**Fig. 1b** Two subwoofers close to floor in middle of walls





**Fig. 2** Recommended placement for four subwoofers in a wall

## 6.0 COLOR MATCH PAINTING (Optional)

Your new subwoofer has a textured finish in neutral white to blend into any area. It may also be painted to match any décor. If you plan to paint your subwoofer, to avoid “painting it to the wall”, we recommend that you **paint it before installation**.

Please note:

- Do not paint the surface behind the grille;
- Do not heat-cure your newly painted subwoofer;
- Avoid painting the subwoofer’s rear surface.

### **To Paint, Follow These Steps:**

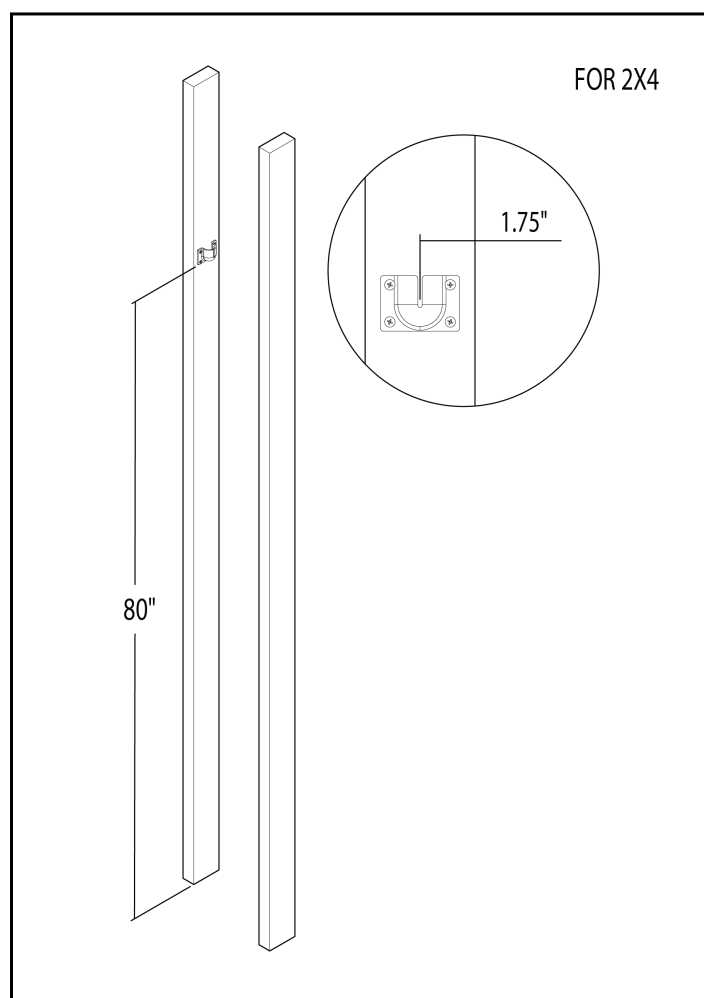
1. Remove the metal grille;
2. In a well-ventilated area, apply several light coats of paint, letting the grille dry completely between coats. Follow the paint manufacturer’s directions;
3. When painting grille, be careful not to plug holes with paint and re-attach after paint has dried. It is easier to spray the grille than to use a brush. **Remove grille before painting.**

## 7.0 BACKBOX INSTALLATION

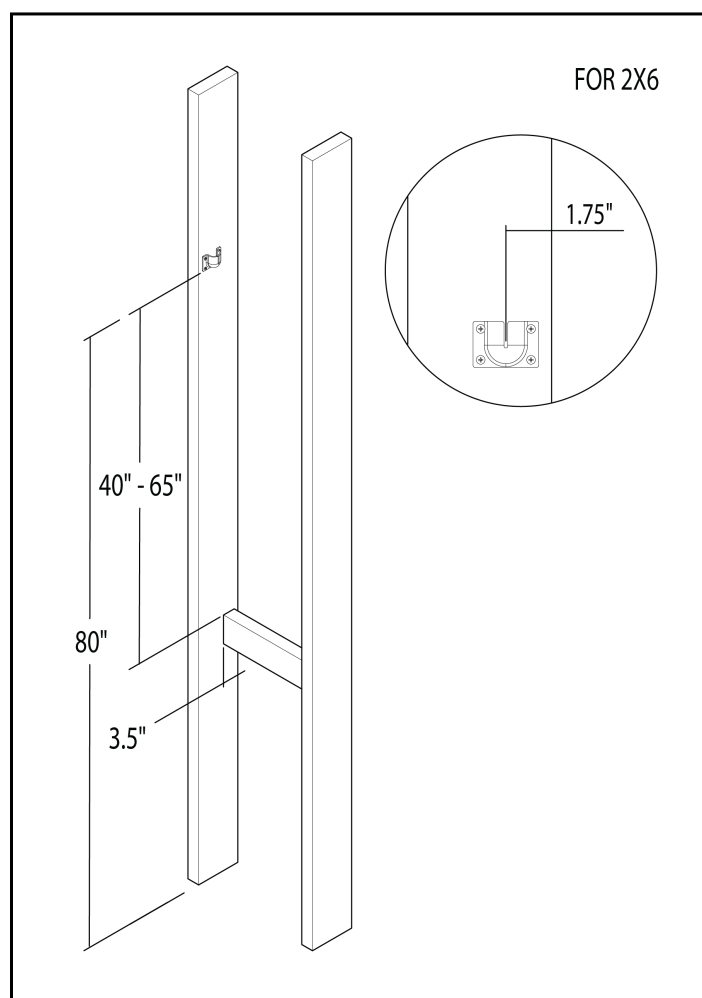
### MOUNTING

1. Locate the middle of the bracket 1.75" from the front of the stud and the bottom of the bracket approximately 80" from the ground and screw it into the studs. *TIP: Installing the bracket 80" from the ground will provide grille clearance for baseboard or trim installation.*
  1. If installing into a 2x6 stud bay, place a cross brace 40"-65" below the mounting bracket, and 3.5" from the front of the studs.
2. Install the Gripple® High Strength Cable onto the bracket.
3. Screw in the hook to the top of the backbox, making sure the open end of the hook faces away from the front of the backbox.
4. Hang the backbox on the rope.
5. Connect the speaker wire to the binding posts located at either end of the enclosure
6. Install the drywall, making a cutout in the wall where the MDF is located (and allowing the wire to pass through)
7. Remove the MDF piece
8. Finish the drywall as desired (TIP: Installing L-Trim along the edges of the cutout will result in a cleaner install)

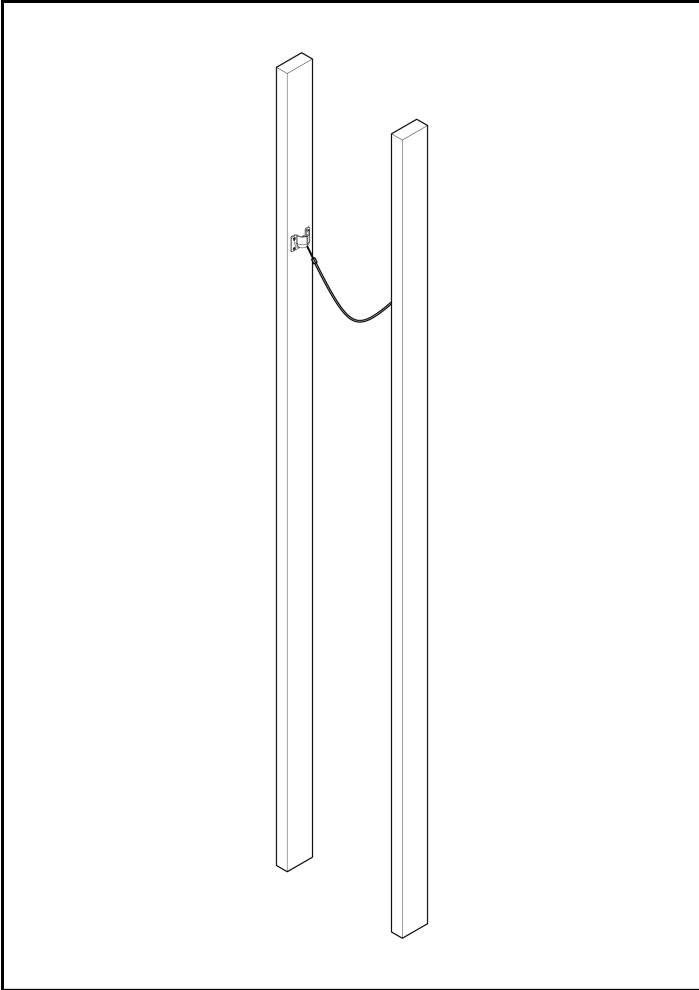
Mounting the SFC12-SYS Backbox to metal framing may require additional reinforcement. Please consult a framing specialist in order to ensure a safe and reliable installation.



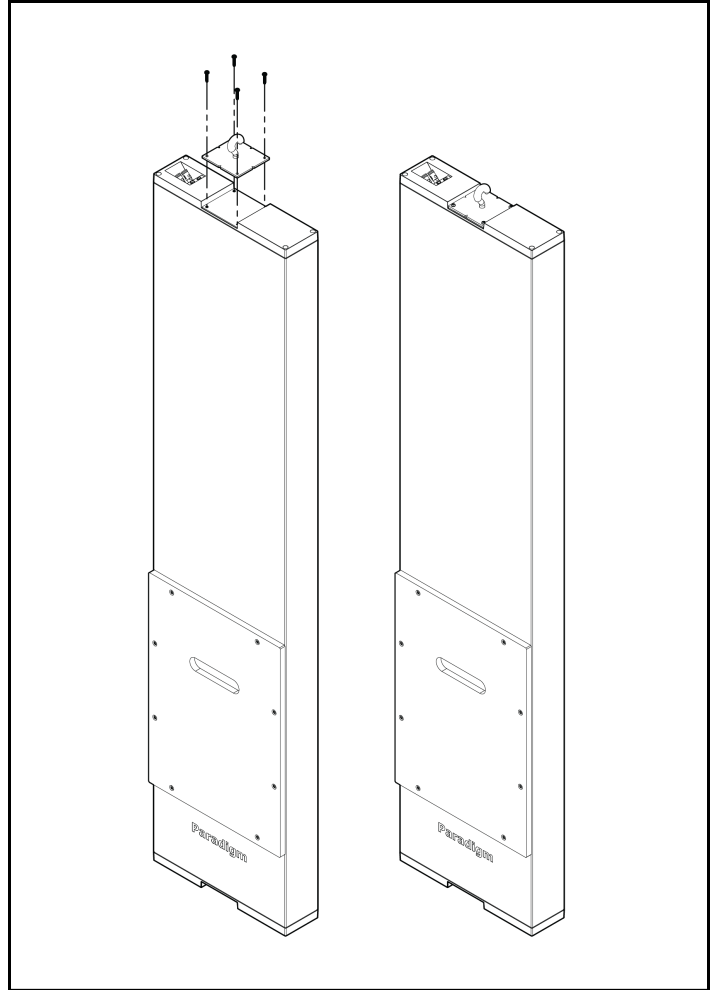
1



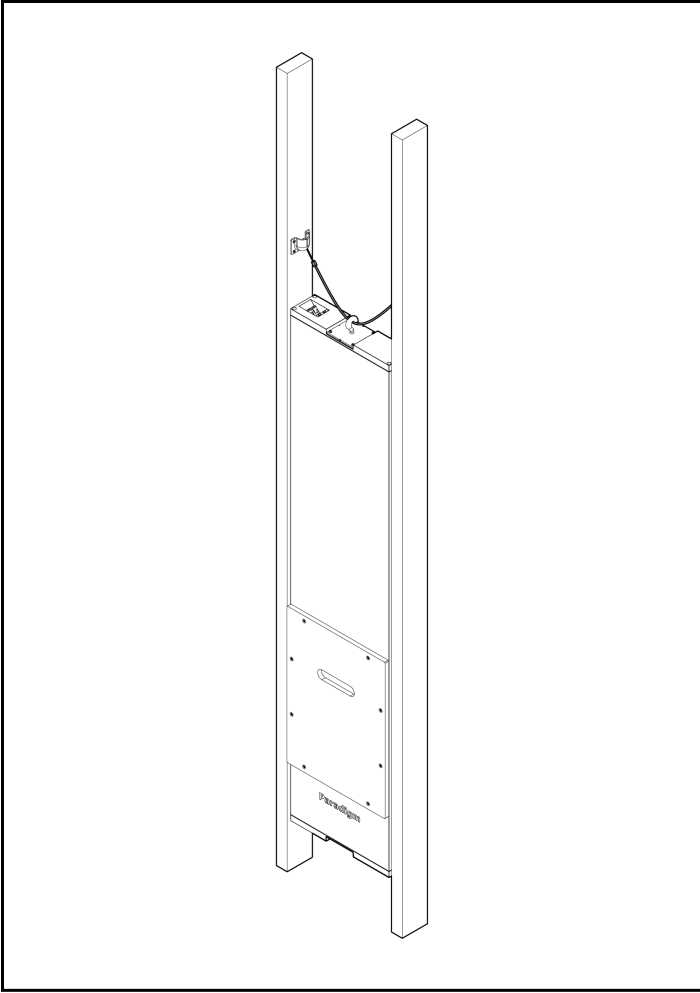
1a



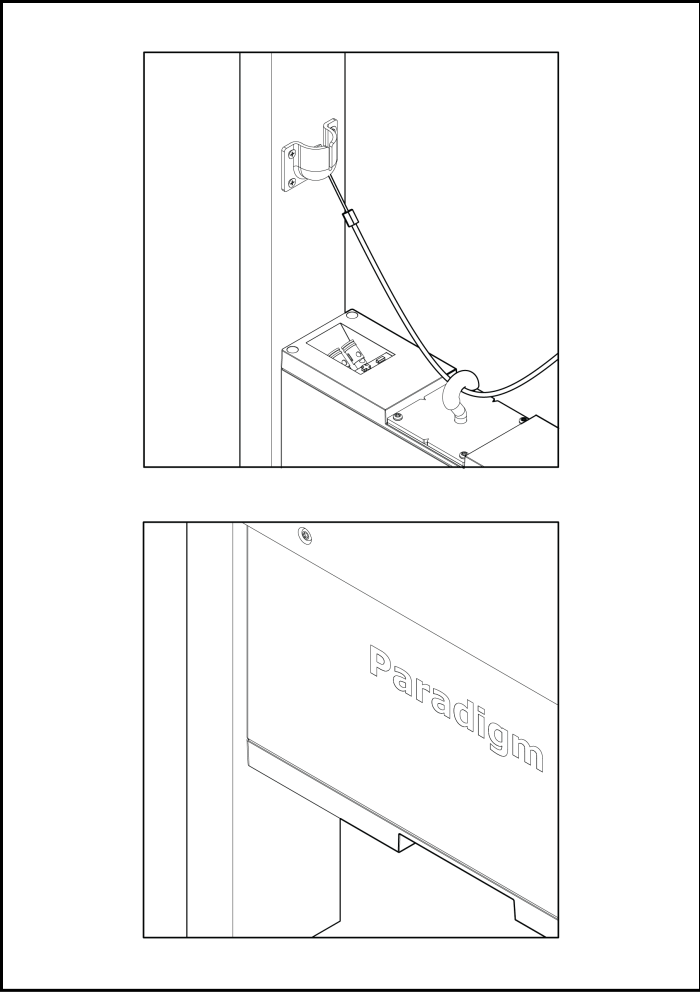
2



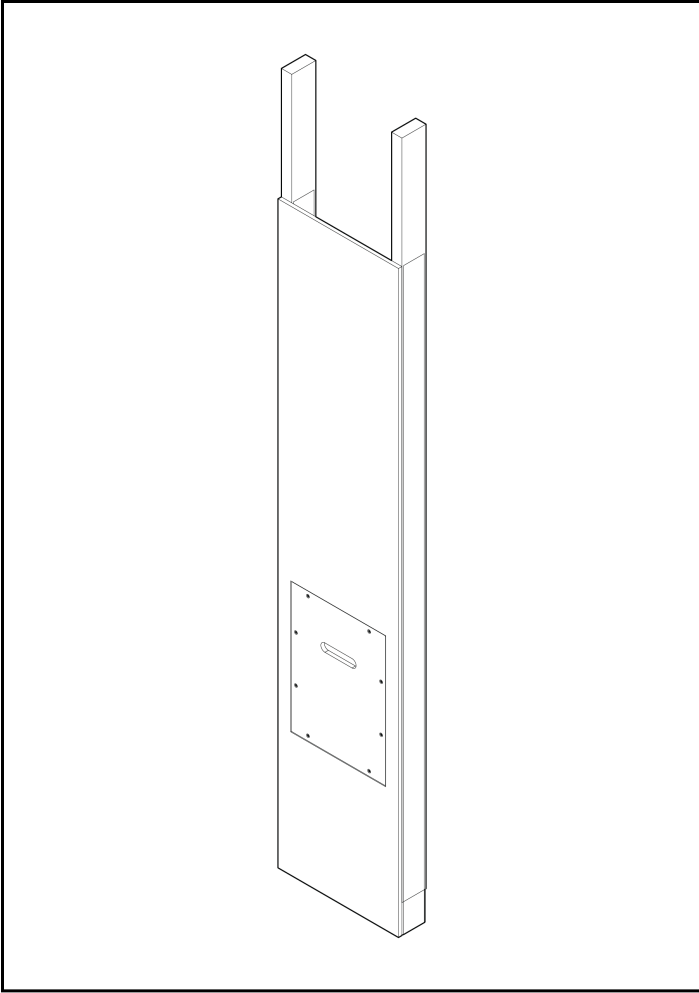
3



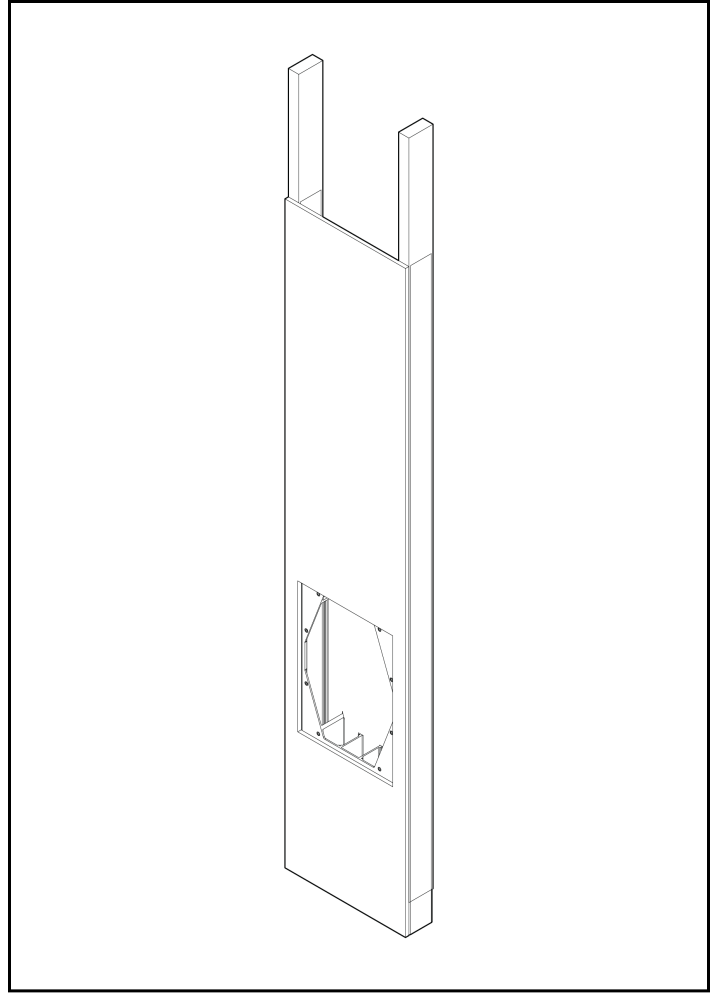
4



5



6



7

## 8.0 WIRING CONNECTIONS

The SFC12-SW presents a load that is compatible with 8 ohms. Please refer to your amplifiers Owner's Manual for it's specific capabilities and wiring instructions.

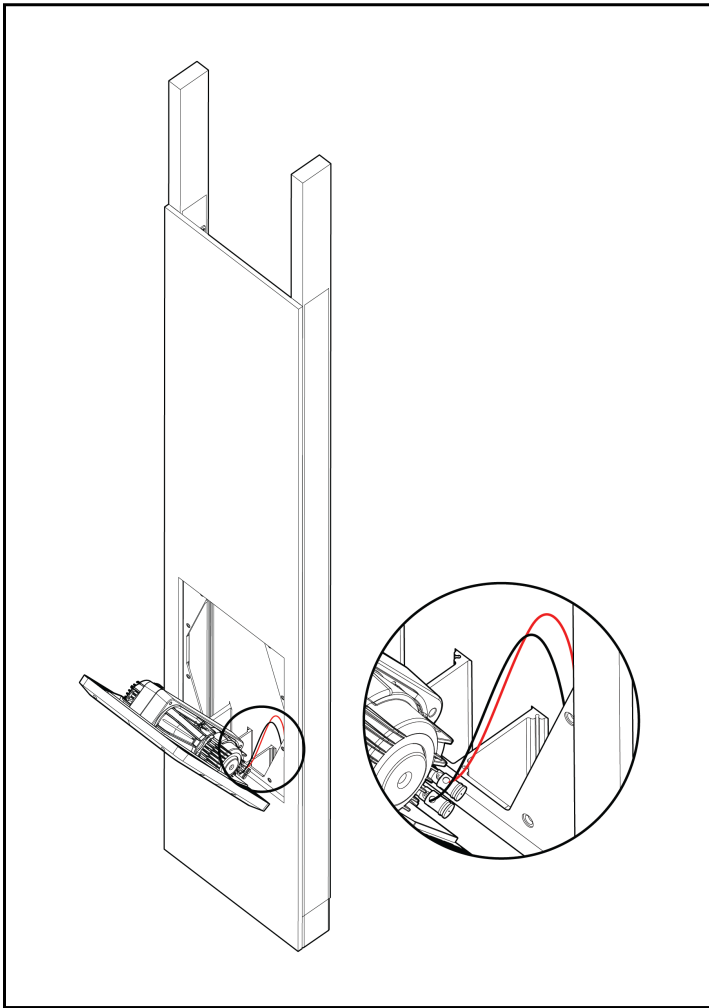
Connect the red and black wires on the inside of the backbox to the red and black binding posts respectively on the subwoofer.

## 9.0 SUBWOOFER INSTALLATION

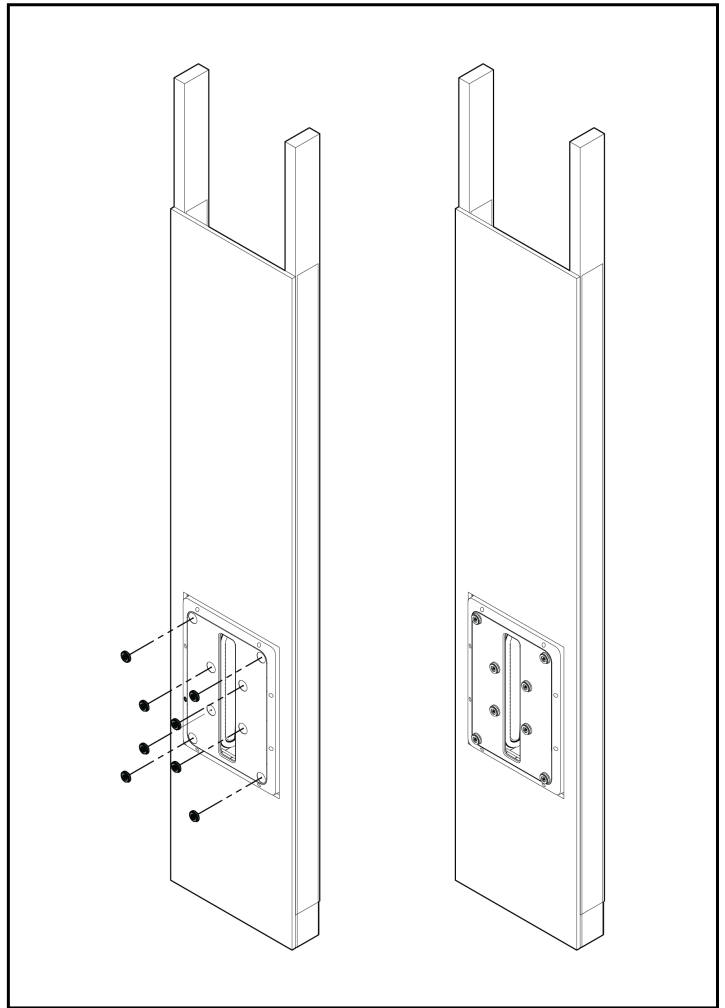
**IMPORTANT!** While it is possible to use a manual screwdriver for installation, we strongly suggest using a power drill. To avoid damaging the rivets, set your drill to a LOW setting. A high power setting is NOT necessary and may cause rivets to crack or break from the added force. **Such damage is NOT covered under warranty.**

1. Connect the red and black wires on the inside of the backbox to the red and black binding posts respectively on the subwoofer to the backbox using screws from KITXXXX.
2. Depending on the drywall thickness used, use the following configurations for each stack of pucks:
  1.  $\frac{1}{2}$ " - M4-14 Torx Screw + 1 damping pad + 1 puck with magnet + 1 1" washer + 1 spring lock washer
  2.  $\frac{5}{8}$ " - M4-14 Torx Screw + 1 damping pad + 1 puck with magnet + 2 1" washer + 2 spring lock washers
  3. 1" - M4-25 Torx Screw + 1 damping pad + 1 puck with magnet + 3 pucks + 1 spring lock washer
  4. 1  $\frac{1}{4}$ " - M4-30 Torx Screw + 1 damping pad + 1 puck with magnet + 4 pucks + 2 1" washers + 1 spring lock washer

TIP: If the grille is rattling, add an additional 1" washer.
6. Place the grille on the subwoofer.



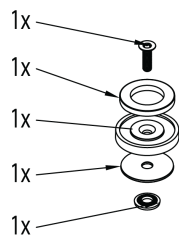
1



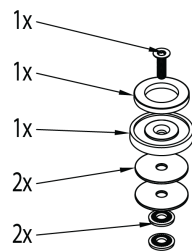
2



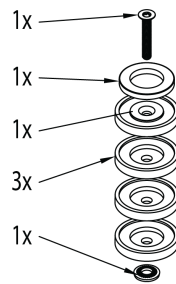
# 1/2" DRYWALL



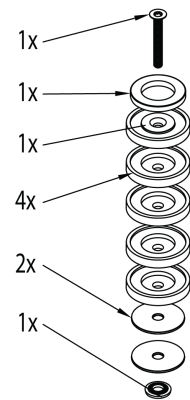
# 5/8" DRYWALL



# 1" DRYWALL



# 1 1/4" DRYWALL

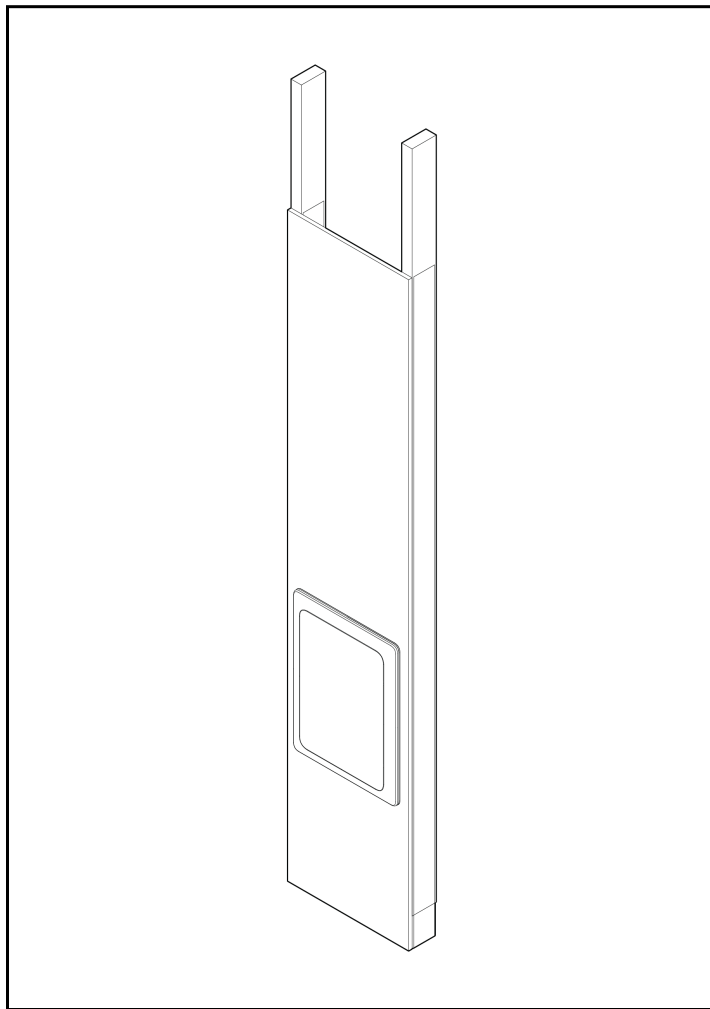


2a

2b

2c

2d



3

# 10.0 LIMITED WARRANTY

**IMPORTANT: Subwoofers covered by this manual are designed for use with a Paradigm® Subwoofer Amplifier only. Use with any other brand of amplifier can cause permanent damage and will void the Paradigm warranty.**

Paradigm® subwoofers covered by this manual are warranted to be and remain free of manufacturing and/or material defects for a period of **three (3) years** from the date of the original retail purchase.

Within the time period specified repair, replacement or adjustment of parts for manufacturing and/or material defects will be free of charge to the original owner.

**Thermal or mechanical abuse/misuse is not covered under warranty.**

## **Limitations:**

- Warranty begins on date of original retail purchase from an Authorized Paradigm® Dealer only. It is not transferable;
- Warranty applies to product in normal home use only. If the product is subjected to any of the conditions outlined in the next section, warranty is void;
- Warranty does not apply if the product is used in professional or commercial applications.

## **Warranty is Void if:**

- The product has been abused (intentionally or accidentally);
- The product has been used in conjunction with unsuitable or faulty equipment;
- The product has been subjected to damaging signals, derangement in transport, mechanical damage or any abnormal conditions;
- The product has been tampered with or damaged by an unauthorized service facility;
- The serial number has been removed or defaced.

## **Owner Responsibilities:**

- Provide normal/reasonable operating care and maintenance;
- Provide or pay for transportation charges for product to service facility;
- Provide proof of purchase (your sales receipt given at time of purchase from your Authorized Paradigm® Dealer).
- The product has been tampered with or damaged by an unauthorized service facility;
- The serial number has been removed or defaced.

Should servicing be required, contact your nearest Authorized Paradigm® Dealer, Paradigm® Electronics Inc., or Import Distributor (outside the U.S. and Canada) to arrange, bring in or ship prepaid any defective unit.

Visit our website at [www.paradigm.com](http://www.paradigm.com) for more information.

Paradigm Electronics Inc. reserves the right to improve the design of any product without assuming any obligation to modify any product previously manufactured.

This warranty is in lieu of all other warranties expressed or implied, of merchantability, fitness for any particular purpose and may not be extended or enlarged by anyone. In no event shall Paradigm Electronics Inc., their agents, or representatives be responsible for any incidental or consequential damages. Some jurisdictions do not allow limitation of incidental or consequential damages, so this exclusion may not apply to you.

**Retain this manual and your sales receipt for proof of warranty term and proof of purchase.**

